

# WELCOME

Welcome to Selma United Methodist Church! So we can better connect with you, please take a moment to complete the **Connection Card** included in this bulletin and drop it in the offering. We want you to have a great experience with us today. If there is anything you need, please ask an usher.

## Children & Youth

Raising kids is a great task. We want to help you raise them to grow into young men and women who love God. You love your kids. We do, too!

We want to help you raise your children into teens who love God. We have well-supervised environments designed just for children from birth through 5th grade, available during all Sunday morning services.

We help transition youth (grades 6-12) to become faithful Christian adults by focusing on friendships, missions, disciplines of faith, worship, and ministry opportunities. Visit our website or Guest Services for a current schedule.

## New to Selma UMC?

If you are visiting with us today, please feel no obligation to give. The offering is for our regular attendees. We hope you enjoy your stay with us. If you have any questions about Selma UMC, stop by Guest Services in the main lobby or give us a call at 765.282.1648.



# TODAY'S ANNOUNCEMENTS

**Guardrails—NEW Series & LIFE Groups** | October 26- November 30. Guardrails are in place on the highway in order to allow us to travel the roads safely, we don't think about them much until somebody hits one- then, more often than not, they are lifesavers. Your friendships, your finances, your marriage- maybe your greatest regrets could be avoided if we establish guardrails in our lives. Any adult not in a LIFE Group is invited to join us on Tuesday's, beginning **Oct. 28, 6:30-8:00pm** at SUMC for our large-setting LIFE Group for this DVD based study. Books on sale TODAY, \$7 each.

**Operation Christmas Child Shoe Boxes** | Bless the life of a child in need around the world by packing a shoe box with small toys, toiletries, and clothes. Add a check for \$7 to cover shipping and bring it to Selma UMC **Dedication Sunday, November 16.** Boxes may be picked up TODAY at Guest Services. Our GOAL: 400 boxes. See the insert in this bulletin on "How to Pack a Shoebox" or visit [samaritanspurse.org](http://samaritanspurse.org)

# OUR MISSION

Our mission is to make disciples of Jesus Christ for the transformation of the world.

# CALENDAR OF EVENTS

## TODAY

- **Wi-Fi** | Feel free to use our guest Wi-Fi today. The password is **SUMCGuest**.
- **Children's Ministry** | Our Children's Ministry is currently collecting boxes of macaroni & cheese to help SUMC's Food Pantry. If you would like to donate place your boxes on the mac & cheese table in the Kidsatorium.

## OCTOBER

- 21 **You've Got Questions? He's Got Answers** | Tuesdays, 6:30-8:00pm for children grades K-5. Bring your children for a night of singing, lessons, games and crafts as they learn about the life of Joseph.
- 26 **Guardrails—NEW Series & LIFE Groups** | Any adult not involved in a LIFE group is invited to be a part of our large-group gathering on Tuesday's, 6:30-8:00pm beginning October 28. See announcement above for more details.

## November

- 2 **Daylight Savings Time ENDS** | Remember to "fall" back by turning your clocks back one hour before you go to bed on Saturday, November 1.

- 2 **NYC 2015 Relief Bus Mission Trip Call-Out** | 10:00am in the hospitality room off the lobby. A great opportunity to serve the homeless of NYC! Trip dates: May 19-24, 2015. Plan to attend meeting for more info.
- 7 **Young Adult Connect & Belong** | This Friday, October 17, 7:00pm at SUMC. If you're out of high school and 18-27, you're invited to join in the fun. This DVD relationship series will help you discover the little things that have a big impact in any relationship. Don't miss the topic this week.
- 9 **Youth Worship Team Mega Practice** | 6:30-8:00pm. Call out for musicians & singers 6th-12th grade. Do you sing or play an instrument? Join the youth worship team. Attend this mega practice. Learn new songs for the semester with your friends!
- 16 **Operation Christmas Child Dedication Day** | 8:30, 10:00 & 11:30am. See announcement above for more details.
- 16 **Youth Bake Sale** | Before & after each service. Proceeds benefit the Youth Shop, Wrap, Serve & Give Party held for adopted clients from LifeStream Services.

# NEXT STEPS

We'd love to join you on the journey in your relationship with Jesus. Below are some ways you can build relationships and make a difference.

## Young Adults

Getting together with other young adults, ages 18-27 (and out of high school) is a great way to experience Jesus together and build lasting friendships. To find out more about our Young Adult Ministry stop by Guest Services.

## LIFE Groups

LIFE Groups are how we experience Jesus together, build lasting friendships, care for one another, and serve others. To find out more about LIFE Groups, mark your Connection Card, stop by Guest Services or visit our website.

## Volunteering to Serve

One of the best ways to grow in your relationship with Jesus and build relationships with other Christians is through serving in a ministry. To find out more about ways to serve, mark your Connection Card, stop by Guest Services or visit [selmaumc.org](http://selmaumc.org). We'll help you find a way to serve that's right for you.



For more information about our events and ministries, or to give online, stop by Guest Services or visit us at [selmaumc.org](http://selmaumc.org).



# STAFF

Lead Pastor..... MarkElcessor@selmaumc.org  
Executive Pastor/Business Administrator..... JerryGillespie@selmaumc.org  
Executive Assistant.....ShawnaSewell@selmaumc.org  
Selma Campus Pastor ..... ToddAustin@selmaumc.org  
Youth, Young Adults & Missions ..... LisaElcessor@selmaumc.org  
Children & Women .....SueAustin@selmaumc.org  
Administrative Asst & Congregational Care.....LoriNeal@selmaumc.org  
Ministry Assistant ..... KimWolfe@selmaumc.org  
General Contact ..... SelmaUMC@selmaumc.org

Yorktown Campus Pastor ..... BillBruneau@selmaumc.org

Custodians..... Phil & Vicky Hughes, George Roberts, & Jayden Pfleeger  
8:30am Nursery Coordinators ..... Jennifer Clements, Missy Davis  
10:00am Nursery Coordinator..... Kelsey Maurer  
11:30am Nursery Coordinator..... Dru Williams

## Little Learner's Preschool & Daycare

Director - Susan Shreve ..... LittleLearners@selmaumc.org

# STATS

October 12, 2014

## Attendance

Selma Campus:

8:30 Youth & Adults..... 111  
8:30 Children ..... 16  
10:00 Youth & Adults... 161  
10:00 Children ..... 31  
11:30 Youth & Adults... 124  
11:30 Children ..... 23

Selma Total ..... 466

Yorktown Campus:

10:45 Youth & Adults... 107  
10:45 Children ..... 25

Yorktown Total ..... 132

Combined Total ..... 598

## General Offering

Selma ..... \$12,634.60  
Yorktown ..... \$1,154.51

“3 Days that Changed the World”

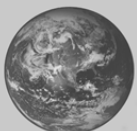
John 12:20-26

Jerry Gillespie

October 19, 2014



WHO IS THIS MAN



The Unpredictable Impact  
of the Inescapable Jesus

# OUR STORY

Selma United Methodist Church began in 1855 by a group of people committed to following Jesus and leading others to do the same. Today, we're keeping that historic mission alive, serving God and our communities at two campuses, and sending people into our communities, across the nation, and around the world to share God's love with others. We're people of all ages and walks of life—factory workers, teachers, accountants, and artists. We're glad you're here.



**SELMA**  
**United Methodist Church**  
selmaumc.org

Selma Campus  
400 N CR 600 E  
Selma, IN 47383  
765.282.1648

Yorktown Campus (The Compass Church)  
8116 W Jackson St  
Muncie, IN 47304  
765.405.1119

## Four Services at Two Locations

Selma: Sundays, 8:30, 10:00 & 11:30am  
Yorktown: Sundays, 10:45am

## Little Learners

Preschool & Daycare  
765.288.4777  
Office Hours: Mon - Fri, 8am-4pm

SEPTEMBER 21 | ... “THE MAN WHO WON’T GO AWAY”

SEPTEMBER 28 | ... “A REVOLUTION OF HUMANITY”

OCTOBER 5 | ... “THE POWER OF FORGIVENESS”

OCTOBER 12 | ... “WHY IT’S A SMALL WORLD AFTER ALL ”

OCTOBER 19 | ... “3 DAYS THAT CHANGED THE WORLD”